



# Integrated Drive Solutions

Highly customizable drive packages for the specific requirements of your application.



The most recent addition to our portfolio, Auburn Gear has been manufacturing exemplary gearing solutions since 1982. Paired with CFR motors, these integrated drive packages are highly customizable to the specific requirements of your application.



Engineering  
Integration  
Expertise



On-Site/On-Staff  
Support



VCL  
Proficiency



Specification from  
Component to  
Drive System

## Primary Industries Served



Sweeper Scrubber



Ground Support



Material Handling



Light EV



Mining / Specialty Agriculture



Work Platforms



ETRAC gearboxes are available with multiple reduction outputs and sizes. ET010, ET040, and ET080 can be mated with a variety of C.F.R. motors, resulting in a completely custom solution tailored to your application.

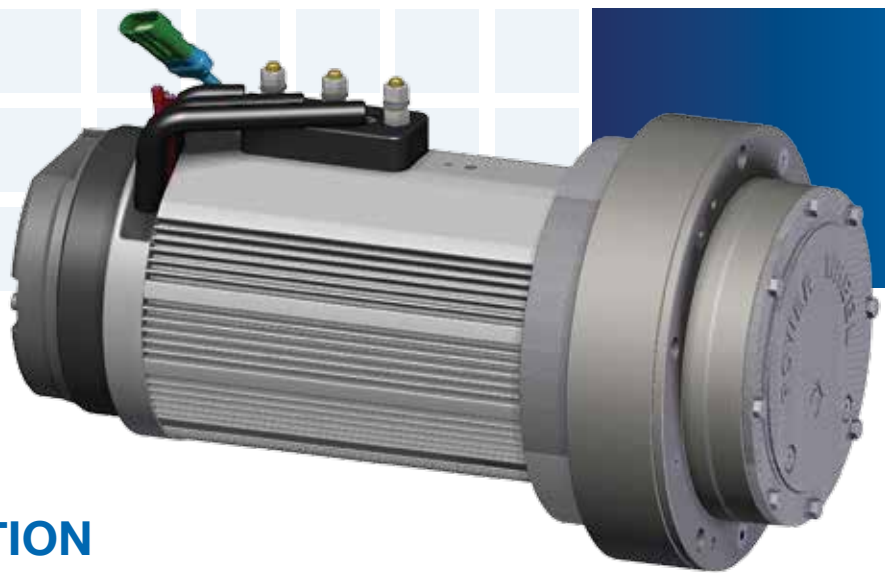
## E-TRAC KIT PAIRINGS

	Gearbox	Voltage	Nominal Motor Torque*	Power	Nominal RPM
<b>ET-010</b> 	ET010	24 V	18.6 Nm (164.6 in-lbs)	3.5 kW (4.69 hp)	2000
	ET010	48 V	18.6 Nm (164.6 in-lbs)	3.5 kW (4.69 hp)	2000
<b>ET-040</b> 	ET040	48 V	28.7 Nm (254 in-lbs)	6 kW (8.04 hp)	2000
	ET040	80 V	28.7 Nm (254 in-lbs)	6 kW (8.04 hp)	2000
	ET040	48 V	38.2 Nm (338.1 in-lbs)	8 kW (10.72 hp)	2000
	ET040	80 V	38.2 Nm (338.1 in-lbs)	8 kW (10.72 hp)	2000
	ET040	48 V	47.8 Nm (423.1 in-lbs)	10 kW (13.40 hp)	2000
<b>ET-080</b> 	ET080	48 V	38.2 Nm (338.1 in-lbs)	8 kW (10.72 hp)	2000
	ET080	80 V	38.2 Nm (338.1 in-lbs)	8 kW (10.72 hp)	2000
	ET080	48 V	47.8 Nm (423.1 in-lbs)	10 kW (13.40 hp)	2000
	ET080	80 V	57.3 Nm (507.1 in-lbs)	12 kW (16.09 hp)	2000
	ET080	96 V	57.3 Nm (507.1 in-lbs)	12 kW (16.09 hp)	2000

*\*Kit output torque will change depending on the gear ratio selected.*

# ET010

## E-TRAC DRIVE SOLUTION

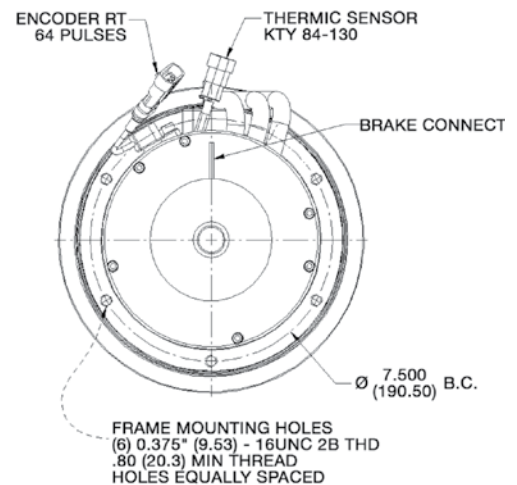
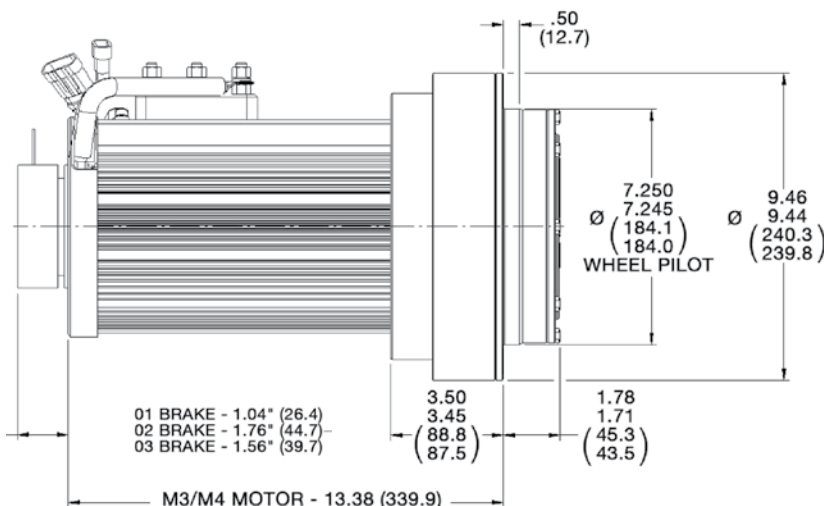
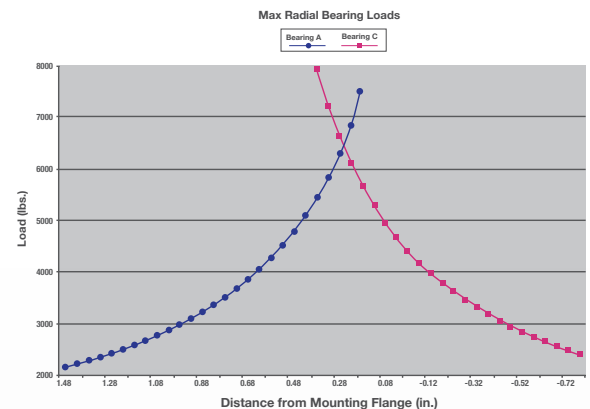


- An integrated drive solution for 24 and 48 Volt systems.
- State-of-the-art advances in gearing and efficiency.
- Advanced E-TRAC system with custom wound AC motors.
- Superior power, performance, and reliability for your applications.

### TARGET MARKETS AND APPLICATIONS

- **Commercial Turf Equipment**  
Mowers, Sprayers
- **Aerial Work Platforms**  
Scissor Lifts, Stock Pickers
- **Light Construction**  
Floor Scrapers/Scrubbers
- **Ground Support Equipment**  
Tugs, Helicopter Dollies
- **Industrial Equipment**  
Automated Guided Vehicles
- **Specialty Agriculture**

### BEARING CURVE



### GENERAL SPECIFICATIONS

Max. Intermittent Output Torque - 10,000 lb-in  
 Max. Input Speed - 5000 RPM  
 Approx. Paired Weight - 124.14 lbs  
 Approx. Oil Capacity - 10 oz

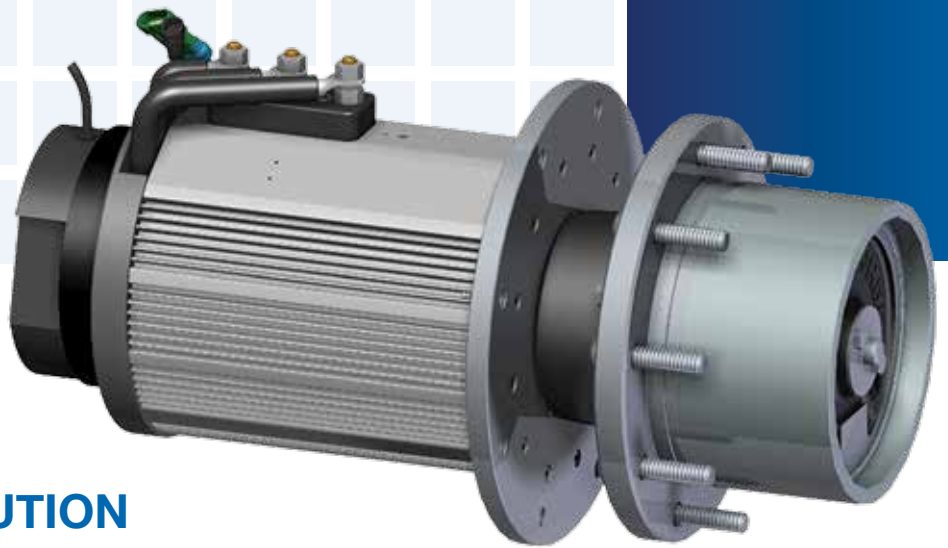
### GEAR RATIOS

25.09 : 1  
 30.89 : 1  
 49.08 : 1



# ET040

## E-TRAC DRIVE SOLUTION

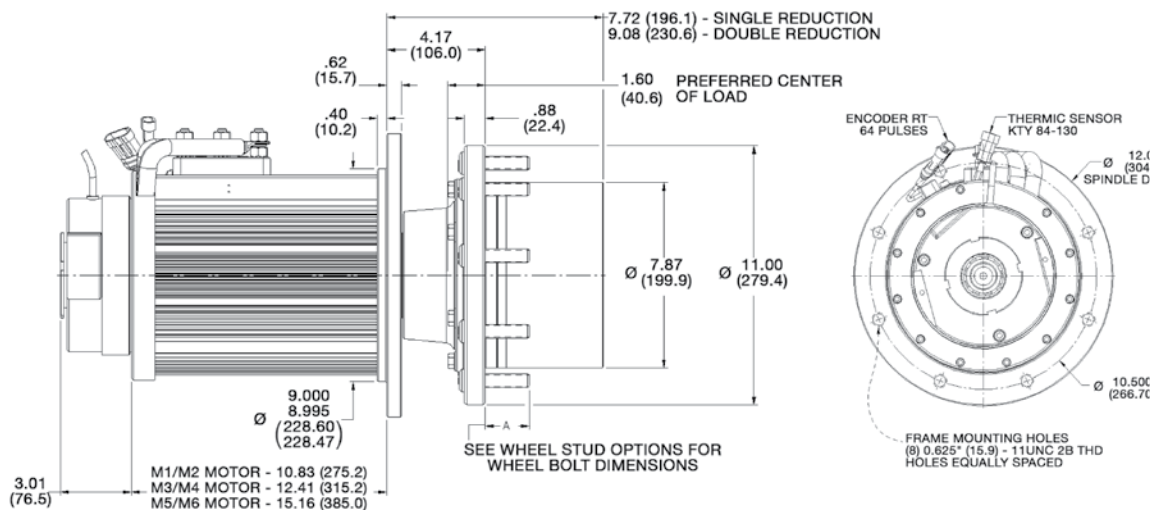
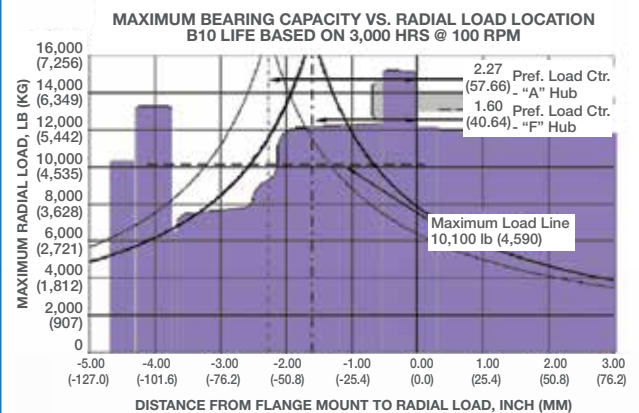


- An integrated drive solution for 48 and 80 Volt systems.
- State-of-the-art advances in gearing and efficiency.
- Advanced E-TRAC system with custom wound AC motors.
- Superior power, performance, and reliability for your applications.

### TARGET MARKETS AND APPLICATIONS

- **Industrial Equipment**  
Automated Guided Vehicles
- **Specialty Agriculture**  
Augers, Traction Drives
- **Light Construction**  
Piggy-back Forklifts
- **Ground Support Equipment**  
Tugs, Belt Loaders
- **Specialty Agriculture**

### BEARING CURVE



### GENERAL SPECIFICATIONS

Max. Intermittent Output Torque - 40,000 lb-in

Max. Input Speed - 5000 RPM

Approx. Paired Weight - 173.18 lbs, 195.23 lbs, 228.30 lbs

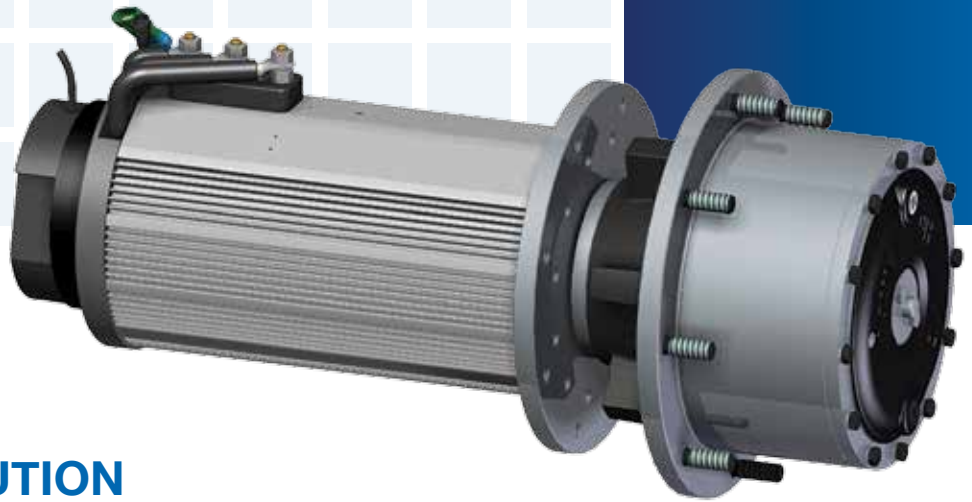
Approx. Oil Capacity - 27 oz

### GEAR RATIOS

14.30 : 1	25.16 : 1	51.65 : 1
15.88 : 1	28.37 : 1	58.12 : 1
17.95 : 1	32.79 : 1	67.01 : 1
20.80 : 1	37.55 : 1	
22.72 : 1	46.74 : 1	

# ET080

## E-TRAC DRIVE SOLUTION

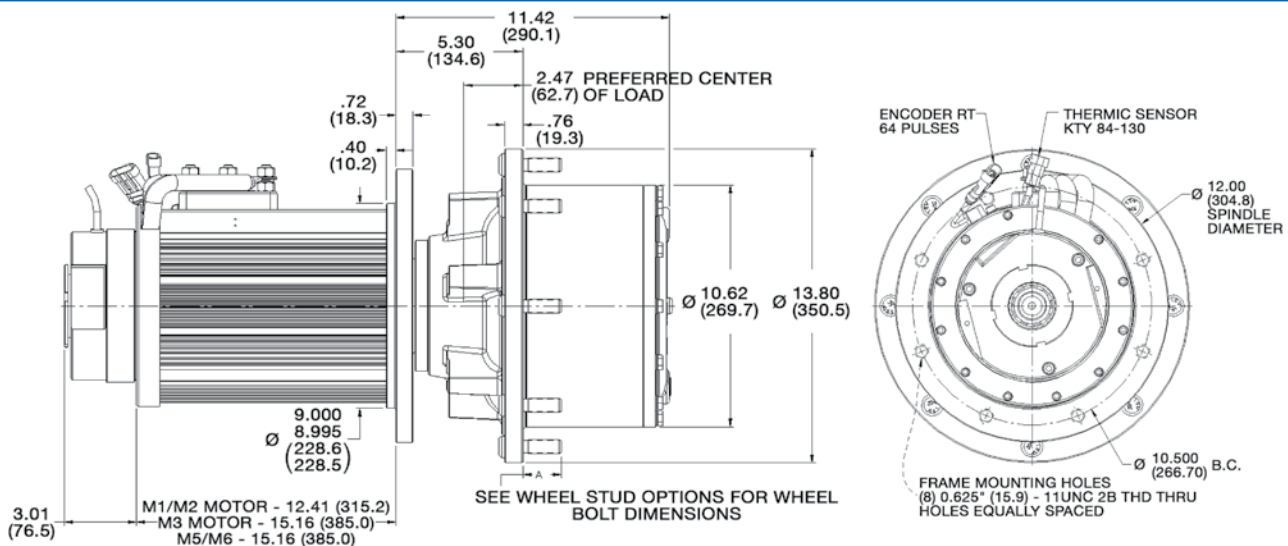
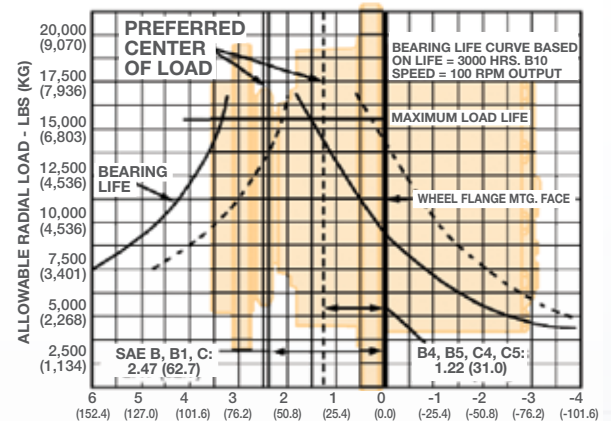


- An integrated drive solution for 48, 80 and 96 Volt systems.
- State-of-the-art advances in gearing and efficiency.
- Advanced E-TRAC system with custom wound AC motors.
- Superior power, performance, and reliability for your applications.

### TARGET MARKETS AND APPLICATIONS

- Commercial Equipment  
People Movers
- Construction  
Puller / Tensioner
- Ground Support Equipment  
Tugs
- Specialty Agriculture

### BEARING CURVE



### GENERAL SPECIFICATIONS

Max. Intermittent Output Torque - 100,000 lb-in

Max. Input Speed - 5,000 RPM

Approx. Paired Weight - 318.23 lbs, 351.30 lbs

Approx. Oil Capacity - 57 oz

### GEAR RATIOS

14.39 : 1	30.50 : 1
17.83 : 1	34.20 : 1
22.59 : 1	41.42 : 1
25.71 : 1	49.00 : 1

## E-TRAC KIT PAIRINGS

HTI #	Gearbox	Voltage	Nominal Motor Torque*	Power	Nominal RPM
4928.042.191s	ET010	24 V	18.6 Nm	3.5 kW	2000
4929.042.191s	ET010	48 V	18.6 Nm	3.5 kW	2000
4932.042.191s	ET040	48 V	28.7 Nm	6 kW	2000
4935.042.191s	ET040	80 V	28.7 Nm	6 kW	2000
4936.042.191s	ET040	48 V	38.2 Nm	8 kW	2000
4939.042.191s	ET040	80 V	38.2 Nm	8 kW	2000
4942.042.191s	ET040	48 V	47.8 Nm	10 kW	2000
4944.042.191s	ET080	48 V	38.2 Nm	8 kW	2000
4946.042.191s	ET080	80 V	38.2 Nm	8 kW	2000
4949.042.191s	ET080	48 V	47.8 Nm	10 kW	2000
4950.042.191s	ET080	80 V	57.3 Nm	12 kW	2000
4951.042.191s	ET080	96 V	57.3 Nm	12 kW	2000

*\*Kit output torque will change depending on the gear ratio selected.*

## MOUNTING OPTIONS

All kits have a variety of possible hub and frame mounting options. Some applications may be more suited to a particular type of mounting solution. Our engineering team may assist with proper specification for your specific application.

### Hub Mount

H1 - (5) M12x1.5 on a 8.500" (215.90 mm) BC

H1 - (9) Wheel Studs on 9.50" (241.3) BC

H1 - (8) Wheel Studs on a 12.375" (314.33mm) BC

### Frame Mounting

S1 - (6) 3/8 - 16UNC on a 7.500" (190.5mm) BC

S1 - (6) 5/8 - 16UNC on a 10.500" (266.70 mm) BC Pilot - 9.00/8.995 (228.60/228.47)

S1 - (8) 5/8 - 11UNC on a 10.500" (266.70 mm) BC

# Values and Mission Statement

Dedication to our customers, guided by our everyday principles, is the cornerstone of our success.

- Provide Positive Customer Experience
- Honesty and Integrity Always
- High Quality Standards and Established Brand Name Products
- Ease of Doing Business
- Innovative Products and Solutions
- Persistent Attention to our Business
- Effective Communication
- Help and Support When You Need It
- Share, Give Back to Less Fortunate
- Ideal Employer, Customer and Supplier Responsiveness

Howland Technology has continuously expanded in our role as a key supplier of power-related components for mobile and stationary equipment. We supply parts for a wide range of applications in industries such as: Industrial, Transportation, Telecommunication, Energy, Factory and Mobile Automation, Material Handling, Solar, Wind, Medical, and a variety of mobile applications requiring electrified solutions.

Howland Technology, Inc also represents the following world class manufactureres:



Howland Technology, Inc. • 8129 North Austin Avenue, Morton Grove, IL 60053 USA

Phone: (847) 965-9808 • Fax: (847) 965-9846  
sales@HowlandTechnology.com • www.HowlandTechnology.com

Howland Technology is your premier sales and component distribution channel, factory authorized for the distribution of all the products showcased.

HowlandTechnology.com