

# Connection technology

## M23 connection technology

## Cordsets, pre-assembled

### With connector, 12 pin

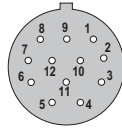
Working temp. -30°C ... +80°C [-22°F ... +176°F]

Order no.

#### Female connector with coupling nut + single-ended

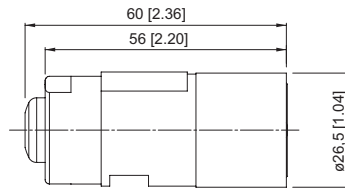
Cable: PVC, 6 x 2 x 0.14 mm<sup>2</sup> [AWG25]  
Housing: metal, IP67

pin socket assignment cw



suitable for our series with RS422 or SinCos output:

KIS50 / KIH50	5000 / 5020
5805 / 5825 <sup>3)</sup>	
5814 / 5834	5814FSx / 5834FSx <sup>3)</sup>
A020 / A02H	H120



#### Terminal assignment

Pin female contacts:	1	2	3	4	5	6	7	8	9	10	11	12	PH <sup>2)</sup>
Core color:	PK	RD-BU	BU	RD	GN	YE	-	GY	-	WH	GY-PK	BN	PH <sup>2)</sup>

standard cable length  
(available from 1 piece)

cable length<sup>1)</sup>

2 m [6.56']  
5 m [16.40']  
10 m [32.81']  
15 m [49.21']

**8.0000.6901.0002**  
**8.0000.6901.0005**  
**8.0000.6901.0010**  
**8.0000.6901.0015**

other cable lengths  
(available from 1 piece)

**8.0000.6901.00xx**  
xx = length in meters:  
1, 3, 8, 12, 20, 25, 30

1) Other cable lengths on request.  
2) Shield on housing.  
3) Connector color assignment is different from encoder color assignment.