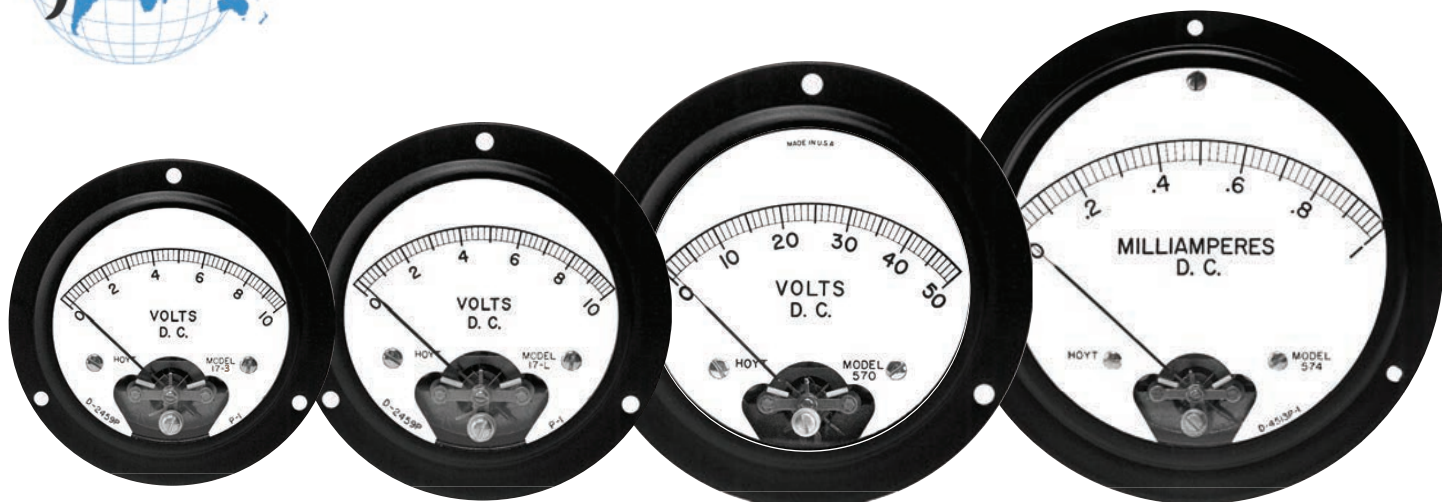




Industrial Panel Meters

Round Meters, Metal Cases



2-1/2"
17/3 ■ D.C. Moving Coil
552 ■ A.C. Repulsion

3"
17/L ■ D.C. Moving Coil
560 ■ A.C. Repulsion

3-1/2"
570 ■ D.C. Moving Coil
580 ■ A.C. Repulsion

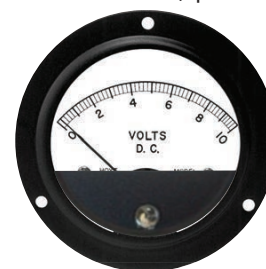
4-1/2"
574 ■ D.C. Moving Coil
617 ■ A.C. Repulsion

FEATURES

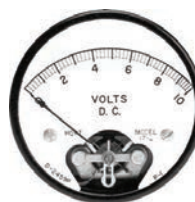
- This series was designed to meet industrial requirements where rugged metal cases with glass fronts provide long service under adverse conditions.
 - Round models ranging in size from 2-1/2" to 4-1/2" are produced in either the $\pm 2\%$ of full scale AC repulsion or DC Moving Coil version.
 - AC ranges are standard up to 50 amperes self contained and 600 AC volts.
 - Ranges down to 10 milliamperes AC are also standard.
 - DC ranges from 20 microamperes to 50 millivolts to 750 volts DC.
 - High current ammeter ranges with external shunt are available, as are special or non-standard ranges.
 - The industrial meters shown here and on the following pages represent the many case styles and options in this series.
- For exact specifications and certified dimensions please contact Hoyt.

CASE OPTIONS

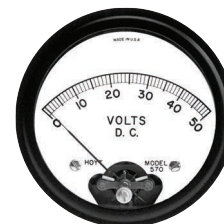
- METAL CASE OPTIONS:
 - WIDE RIM METAL (option code: WR)
 - WIDE RIM METAL WITH SEMI-MASK (option code: SM)
 - NARROW RIM METAL (option code: NR)
 - NARROW RIM METAL WITH SEMI-MASK (option code: NRSM)
 - STRAIGHT SIDE METAL CASE (option code: SS)



WIDE RIM SEMI-MASKED



STRAIGHT SIDE



NARROW RIM



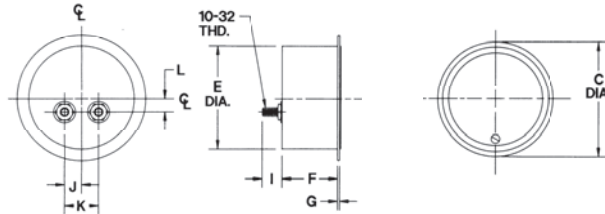
Industrial Panel Meters

Round Meters, Metal Cases

NARROW RIM METAL (option code: NR)



- 2-1/2"
 - 17/3 ■ D.C. Moving Coil
 - 552 ■ A.C. Repulsion
- 3"
 - 17/L ■ D.C. Moving Coil
 - 560 ■ A.C. Repulsion
- 3-1/2"
 - 570 ■ D.C. Moving Coil
 - 580 ■ A.C. Repulsion



■ ALL DIMENSIONS IN INCHES

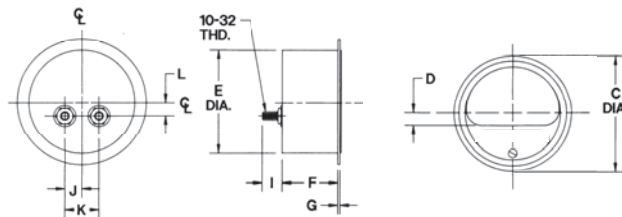
MODELS	A	B	C	D	E	F	G	H	I	J	K	L
17-3/552	-	-	2.29	-	2.06	1.33	0.10	1.16	0.50	0.48	0.97	0.00
17-L/560	-	-	2.81	-	2.50	1.44	0.12	1.14	0.50	0.48	0.97	0.12
570/580	-	-	3.31	-	3.00	1.59	0.11	1.69	0.50	0.48	0.97	0.39

NOTE: USE U-CLAMP TO MOUNT NARROW RIM METERS

NARROW RIM METAL WITH SEMI-MASK (option code: NRSM)



- 2-1/2"
 - 17/3 ■ D.C. Moving Coil
 - 552 ■ A.C. Repulsion
- 3-1/2"
 - 570 ■ D.C. Moving Coil
 - 580 ■ A.C. Repulsion



■ ALL DIMENSIONS IN INCHES

MODELS	A	B	C	D	E	F	G	H	I	J	K	L
17-3/552	-	-	2.29	0.29	2.06	1.33	0.10	1.16	0.50	0.48	0.97	0.00
570/580	-	-	3.31	0.37	3.00	1.59	0.11	1.69	0.50	0.48	0.97	0.39

NOTE: USE U-CLAMP TO MOUNT NARROW RIM METERS



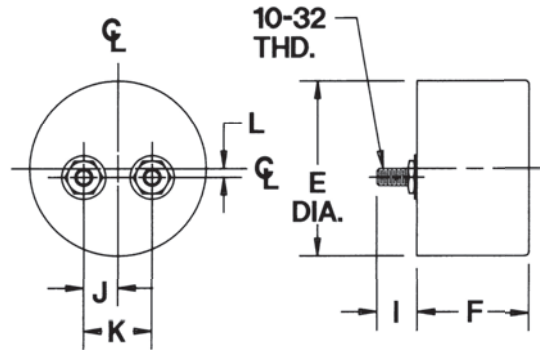
Industrial Panel Meters

Round Meters, Metal Cases

STRAIGHT SIDE METAL CASE (option code: SS)



- 2-1/2"
- 17/3 ■ D.C. Moving Coil
- 552 ■ A.C. Repulsion
- 3"
- 17/L ■ D.C. Moving Coil
- 560 ■ A.C. Repulsion



■ ALL DIMENSIONS IN INCHES

MODELS	E	F	I	J	K	L
17-3/552	2.05	1.43	0.50	0.48	0.97	0.00
17-L/560	2.50	1.72	0.50	0.48	0.97	0.12