



LCD Digital Panel Meters

Digital Meters

3½ Digit LCD with Loop Powered Board



FEATURES

- Low-cost, high-performance replacement for many OEM DPMs
- Optional RED, GREEN or AMBER backlighting
- Snap-in bezel mount eliminates mounting hardware
- Resistant to RF and EMI
- 3½ digits with high-contrast LCD
- 4-20 mA loop powered input
- User-selectable, displayed engineering units

SPECIFICATIONS

DISPLAY

- Digits:** 3½ digits (± 1999 counts)
Type: 0.45" (11.4 mm) 7 segment LCD
Backlighting: Optional Red Negative (red numbers/black background)
Optional Green Negative (green numbers/ black background)
Optional Amber Negative (amber numbers/ black background)
Optional Green Positive (black numbers / green background)
Polarity: automatic, "-" displayed
Annunciators: °F, °C, PSI, %, user-selectable or V, A, KW, PF
Decimal Points: 3 position, user-selectable
Overrange: three lower order digits blank for inputs >1999 & < -1999

INPUTS

- Ranges:** 4-20 mA DC
Configuration: bipolar differential
Impedance: 300 Ω nominal

PERFORMANCE

- Accuracy:** $\pm (0.1\% \text{ fs} + 2 \text{ count})$
Conversion Rate: 3 per second
Normal Mode Rejection: $>30 \text{ dB @ } 60 \text{ Hz}$
Common Mode Range: $\pm 1 \text{ VDC max}$
Common Mode Rej.: $>86 \text{ dB}$
Adjustment: span (gain) and zero (offset)
Warmup: 10 minutes typical
Temperature Coeff.: $\pm 100 \text{ ppm per } ^\circ\text{C typical}$

ENVIRONMENT

- Operating Range:** 0 to 50 °C
Storage Range: -20 to 70 °C

POWER SUPPLY

- Optional Backlight:** powered by the milliamp control loop

MOUNTING

CONNECTION

- 24 VDC at 35 mA typical
snap-in bezel mount
2 screw terminal (4 with backlight)

Hoyt Electrical Instrument Works Inc.

23 Meter Street
Penacook, NH 03303

Phone: (800) 258-3852

Fax: (603) 753-9592

Email: sales@hoytmeter.com

www.hoytmeter.com

H030314

Page 1 of 3

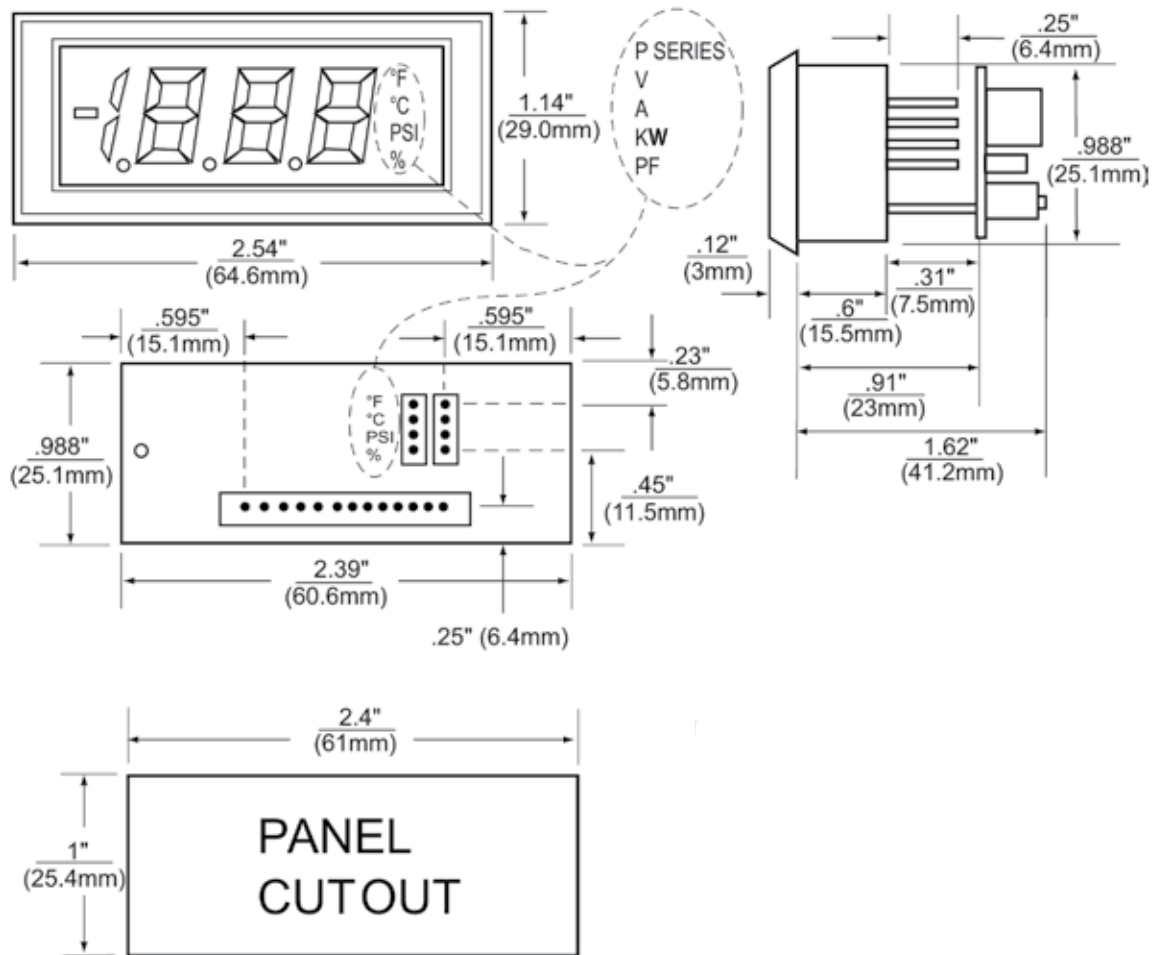


LCD Digital Panel Meters

Digital Meters

3½ Digit LCD with Loop Powered Board

DIMENSIONS





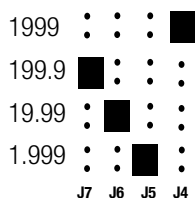
LCD Digital Panel Meters

Digital Meters

3½ Digit LCD with Loop Powered Board

JUMPER SELECTION & WIRING

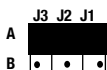
1. DECIMAL SELECTION:



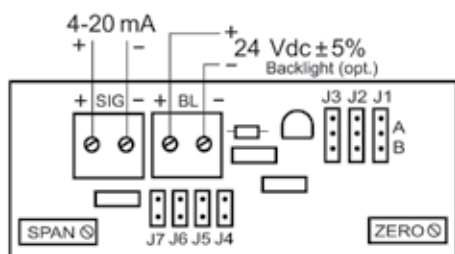
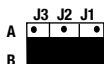
2. J1, J2, J3 SELECTION:

IF: OFFSET (ZERO) IS 0 or

OFFSET (ZERO) > 0 and GAIN (SPAN) ÷ OFFSET (ZERO) ≥ 5



IF: OFFSET (ZERO) > 0 and GAIN (SPAN) ÷ OFFSET (ZERO) < 5



WIRING

HOW TO ORDER

PART NUMBER	BACKLIGHT COLOR	METER INPUT	BACKLIGHT POWER
HLPI-3E*	NO BACKLIGHT		NONE
HLPI-3EAN*	NEG AMBER		24VDC
HLPI-3EGN*	NEG GREEN		24VDC
HLPI-3ERN*	NEG RED		24VDC
HLPI-3EGP*	POS GREEN		24VDC

*Add (P) for Power Engineering Units V, A, KW, PF

ACCESSORIES

HPW2-24	Regulated 120V AC to 24V DC Power Supply
HCVC	Calibrator